

COMPASS

1334 POTRERO AVENUE SAN FRANCISCO

PROPERTY SQ FT INFORMATION
MEASUREMENTS CALCULATED TO THE EXTERIOR WALLS

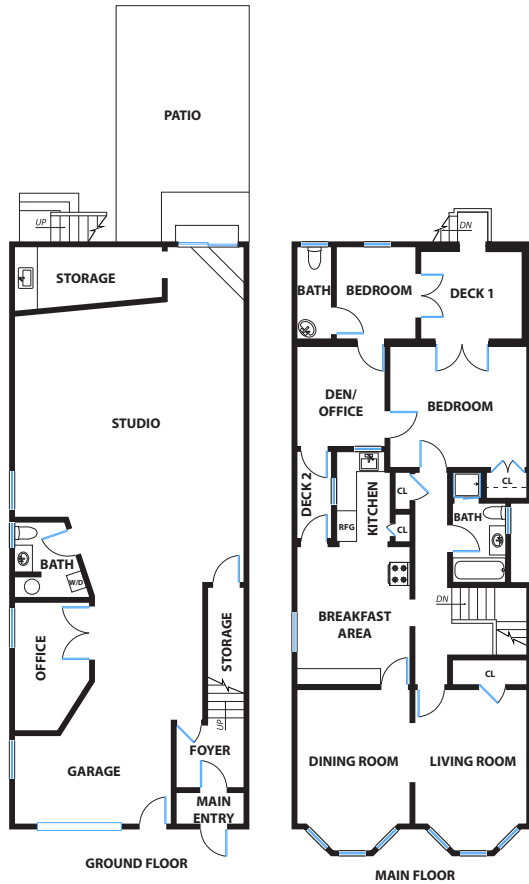
LIVING SPACE: 1365 SQ FT

- * Main House (Foyer): 96 Sq Ft
- * Main House (Main Floor): 1269 Sq Ft

NON-LIVING SPACE: 1429 SQ FT

- * Ground Floor Non-Living Space: 1290 Sq Ft
- * Deck 1: 107 Sq Ft
- * Deck 2: 32 Sq Ft

COMBINED: 2794 Sq Ft



PRESENTED BY : AMANDA SHARP
DRE #: 01787303

DISCLAIMER: RENDERING BY OPEN HOMES PHOTOGRAPHY. ALL MEASUREMENTS ARE APPROXIMATE AND MAY NOT BE EXACT.
DO NOT RELY ON THE ACCURACY OF THIS FLOOR PLAN WHEN DETERMINING THE PRICE OF A PROPERTY OR MAKING DECISIONS
REGARDING BUYING OR SELLING OF PROPERTIES WITHOUT INDEPENDENT VERIFICATION.

1334 POTRERO AVENUE SAN FRANCISCO

PROPERTY SQ FT INFORMATION
MEASUREMENTS CALCULATED TO THE EXTERIOR WALLS

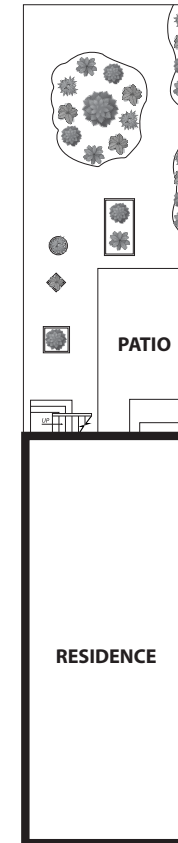
LIVING SPACE: 1365 SQ FT

- * Main House (Foyer): 96 Sq Ft
- * Main House (Main Floor): 1269 Sq Ft

NON-LIVING SPACE: 1429 SQ FT

- * Ground Floor Non-Living Space: 1290 Sq Ft
- * Deck 1: 107 Sq Ft
- * Deck 2: 32 Sq Ft

COMBINED: 2794 Sq Ft



DISCLAIMER: RENDERING BY OPEN HOMES PHOTOGRAPHY. ALL MEASUREMENTS ARE APPROXIMATE AND MAY NOT BE EXACT.
DO NOT RELY ON THE ACCURACY OF THIS FLOOR PLAN WHEN DETERMINING THE PRICE OF A PROPERTY OR MAKING DECISIONS
REGARDING BUYING OR SELLING OF PROPERTIES WITHOUT INDEPENDENT VERIFICATION.